
LIFTING EQUIPMENT

LIFTING EQUIPMENT –

SWING LOADERS

30.1103.00 and 30.2104.00

Swing loader is designated only for fast and effective lifting and turning of 200 l trolleys. They are made of stainless steel, 1.4301 DIN (AISI 304).

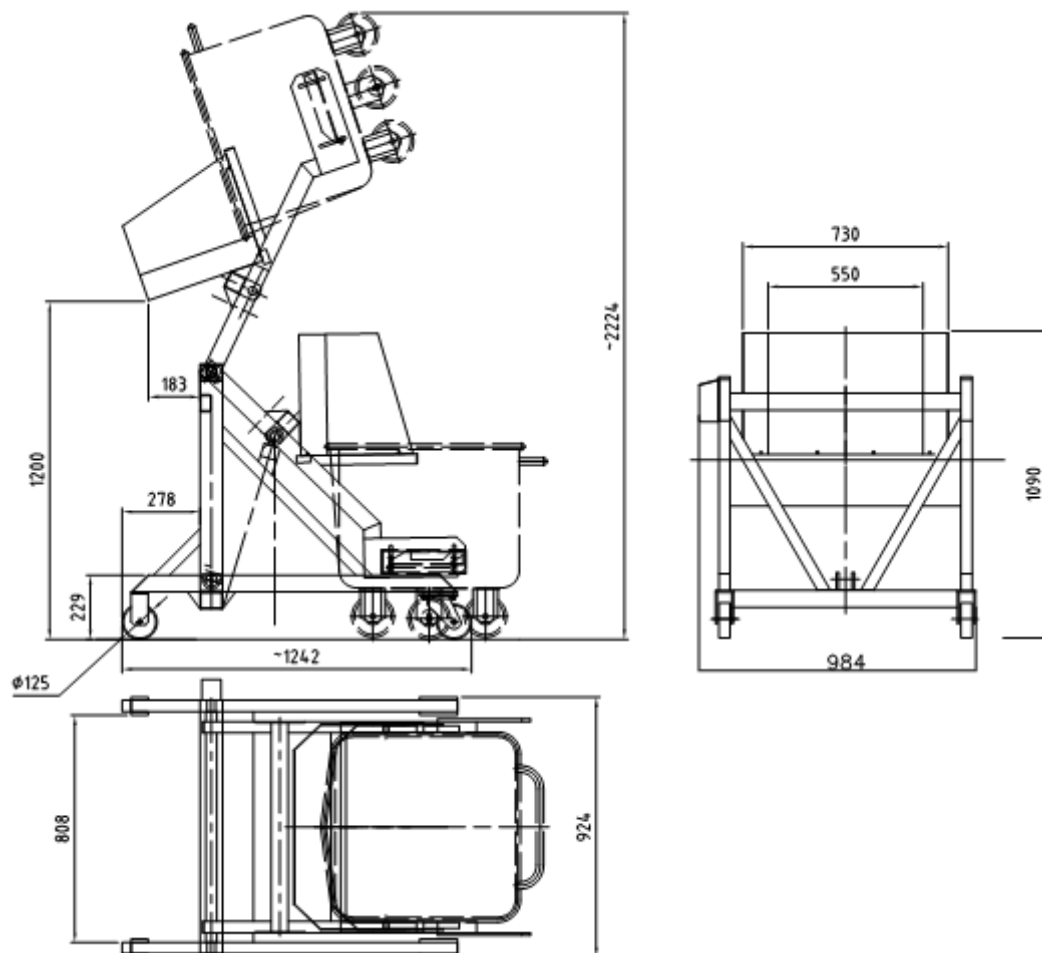
They can be driven by hydraulic or pneumatic system.

They can be fixed or movable. Execution-left or right.

The machines complies with the Council Directives No. 2006/42/EC and 2006/95/EC and USDA regulations.



LIFTING EQUIPMENT



LIFTING EQUIPMENT

LIFTING EQUIPMENT - SWING LOADERS

Art. No.	30.0003.00	30.1103.00	30.2104.00
Dimensions (L,W,H mm)	1180/900/1080	1220/1117/1200	1242/1100/1090
Designation	200 l trolleys	200 l trolleys	200 l trolleys
Elevating capacity kg	300	300	350
Turning height – mm	1200	1200	1200
Fixed/mobile	yes/no	no/yes	no/yes
Control block - left/right side	30.0003.00/30.1003.00	30.0103.00/30.1103.00	30.3104.00/30.2104.00
Installed power - kW	0,6	0,6	-
Power supply - electricity/water/steam/compressed air/drain	3x400+230V/50Hz	3x400+230V/50Hz	min 0,6 MPa
Miscellaneous	hydraulic	hydraulic	pneumatic

LIFTING EQUIPMENT



30.0103.08 – for barrels and drums



30.5101.01 – with storage battery for vessels



30.1009.05 – for containers

Art. No.	30.0103.08	30.5101.01	30.1009.05
Dimensions (L,W,H mm)	1430/990/1270	1160/1160/1240	2055/2050/1300
Designation	barrels (900 mm, ø 600; 970 mm, ø 590) and drums (970 mm, ø 590)	vessels, 640x453,5x305 mm	containers, 1200x1000x760 mm
Elevating capacity kg	300	60	1000
Turning height – mm	990	780	1200
Fixed/mobile	no/yes	no/yes	yes/no
Control block - left/right side	30.0103.08/30.1103.08	no/yes	30.0009.05/30.1009.05
Installed power - kW	0,6	-	2,3
Power supply - electricity/water/steam/compressed air/drain	3x400+230V/50Hz	-	3x400+230V/50Hz
Miscellaneous	nonstandard fork	with storage battery	