

---

## HYGIENE EQUIPMENT

---

### **PASS-THROUGH BOOT CLEANING MACHINE 12.1000.00**

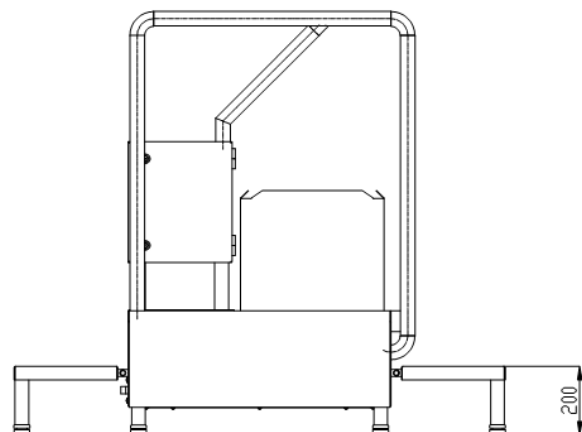
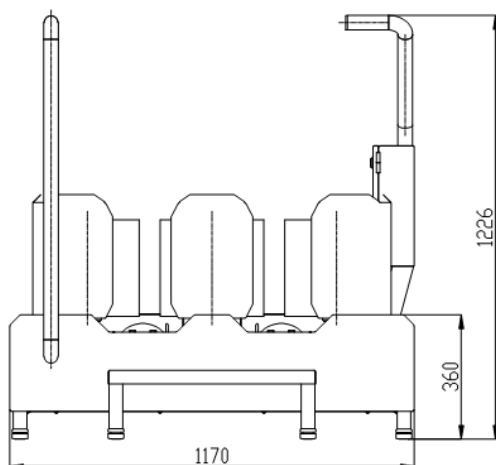
The machine is designated for boots cleaning when entering in or going out of working areas.

It consists of five brushes with an independent motor-gear each, a corpus with steps and parapets, injecting system of washing agent, automatic injector dosing of washing concentrate, control block. The machine is activated by a sensor button.

The cleaning process is controlled by time or by a sensor button.

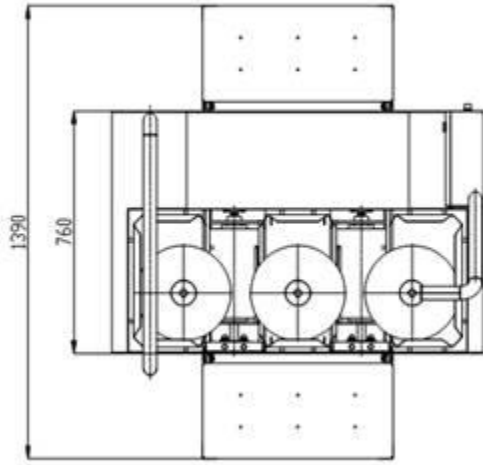
A gate or turn style can be integrated at the exit.

The machine complies with the Council Directives No. 2006/42/EC and 2006/95/EC and USDA regulations.



## HYGIENE EQUIPMENT

---



### Technical data:

Power supply	V/Ph/Hz	400/3/50
Control voltage	V	24 DC
Installed power	kW	~ 1.2
Water supply	bar	min 2
Water outlet	mm	Ø50
Weight	kg	~ 120
Passing time	sec	5-6

### Dimensions:

Length of body (without steps)	mm	760
Total length	mm	1390
Length of sole brushes	mm	300/Ø170
Height of boot brushes	mm	300/ Ø280
Width	mm	1170
Height		1226

## HYGIENE EQUIPMENT

---



**12.1200.00 – with turn style**



**12.1100.00 – non passing**



**12.2070.01 – pass-through, with sole and boot cleaning**

## HYGIENE EQUIPMENT

### BOOT CLEANING MACHINE

Art. No	12.1000.00	12.1100.00	12.1200.00	12.2070.01
Dimensions (L,W,H mm)	1390/1170/1226	849/806/1057	1810/1170/1392	2545/1315/1135
Hand disinfection unit/sink	no/no	no/no	no/no	no/no
Turn style/gate	no/no	no/no	yes/no	yes/no
Disinfection bath/drip-off zone	no/no	no/no	no/no	no/no
Brushes - soles/boots (length of horizontal/height of vertical in mm)	2x300/3x300	1x300/2x300	2x300/3x300	2x700/3x300
One-way/two-ways	two-ways	one-way	one-way	two-ways
Pass-through/non-passing	pass-through	non-passing	pass-through	pass-through
Installation - floor/wall	yes/no	yes/no	yes/no	yes/no
Passing time (sec)	~ 4-6	~ 4	~ 6	~ 4-8
Instaled power (kW)	~ 1.2	~ 0.6	~ 1.2	~ 1.2
Power supply - electricity/water/steam/compresed air/drain	3x400 V / 50 Hz min. 2 bar water drain DN50	3x400 V / 50 Hz min. 2 bar water drain DN50	3x400 V / 50 Hz min. 2 bar water drain DN50	3x400 V / 50 Hz min. 2 bar water drain DN50
Miscellaneous	2 horizontal and 3 vertical brushes	1 horizontal and 2 vertical brushes	2 horizontal and 3 vertical brushes	2 horizontal and 3 vertical brushes